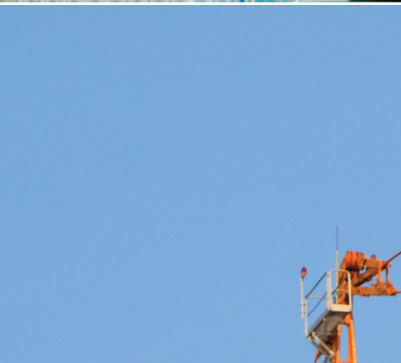
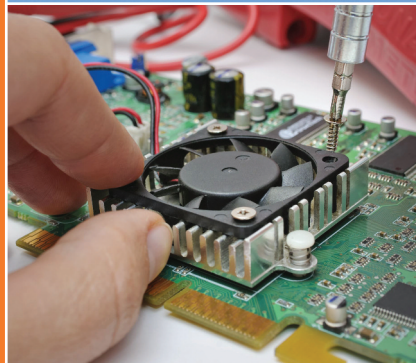




RAEDI
 Rochester Area Economic Development Inc.

Retain. Grow. Diversify.

2016 AND BEYOND





Kerry Bio-Science is doing a \$25 million modernization expansion to replace their fermenters with new technology. RAEDI assisted them in securing a \$175,000 job creation loan. Kerry will retrain all of their employees on the new technology. Kerry also worked with RCTC on a customized training grant with the assistance of RAEDI, DEED, and the City of Rochester.

RAEDI helped facilitate approximately \$50 million of investment and the creation of 150 new jobs. RAEDI's \$1.2 million operating budget equates to almost \$42 of private investment for every dollar spent on operations. The job creation cost is approximately \$8,000 compared to the federal standard cost of \$10,000 per job.

SBA Fixed-Asset Loan Program

15
loans funded
totaling



total
project
investment



66
new jobs
projected
within two
years



121
loans in
portfolio
currently at



Mayo Clinic Business Accelerator

23
tenants

7

corporate and venture
capital partners

4

tenants graduated
to date

8

community organizations
supported

\$7.1M

early-stage capital
raised to date

60

new jobs created
to date

17

email campaigns
(1,500 recipients each)

15

entrepreneurial
events

600

people attended
accelerator events



Economic Development Fund



35

businesses applied for funding to date



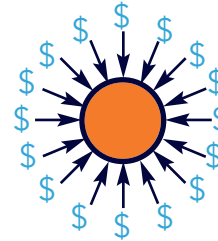
11

businesses funded to date*



\$1.35M

invested to date



\$31M

in follow-on investment from other sources



57

jobs created

*Ambient Clinical Analytics, Geneticure, HB Healthcare Safety, Hunhu Healthcare, Imanis Life Sciences, LAgen Laboratories, ReGen Theranostics, Sonex Health, Xcede Technologies, GoRout, LiquidCool Solutions

Economic Trends Over 5 Years

■ 2012 ■ 2013 ■ 2014 ■ 2015 ■ 2016



Total Employment Rochester MSA

2012 – 114,801
2016 – 119,657



Total Unemployment Rochester MSA

2012 – 4.2%
2016 – 3.3%



Commercial & Residential Building Permits

2012 - \$328,501,531
2016 - \$442,846,498



Home Sales

2012 - \$359,860,919
2016 - \$582,548,668

Rochester was ranked as one of 50 Best Cities for Entrepreneurs in 2016 by Entrepreneur Magazine and Livability.com

17 economic indicators were analyzed for more than 2,200 cities with populations greater than 20,000.

Journey to » » GROWTH

One Journey. One Region. One Voice.



75+
presentations



30+
J2G projects &
endorsed initiatives



25+
communities
involved



150
volunteers



5
regional public meetings
(Byron, Chatfield, Pine Island,
Rochester, Spring Valley)



35
financial partners
and growing

Familiarization Tour brought a national site selector to tour our region as a consideration for new business. The event was hosted by RAEDI, CEDA, Red Wing Port Authority, and Winona Port Authority.

Industry Roundtables included food & dairy, manufacturing, technology, and tourism. J2G representatives heard challenges and opportunities facing these industries and how to best provide service and support.

Regional Development Tour took 40 attendees on a tour of Blooming Prairie, Byron, Dodge Center, and Stewartville to learn about economic activity and opportunities. The event was hosted by J2G and CEDA.

Community Video Project was designed to involve students throughout the J2G region. Community videos were created with the winning video receiving a \$1,000 scholarship. This project was supported by J2G, SMIF, and SEMN Together.

Regional Transportation Priorities include the support of the completion of Highway 14 improvements and bridge bonding program funding.

We Are More (WAM) Traveling Exhibit showcases the benefits of diversity and inclusion in our region with an installation of 4'x6' images. WAM kicks off in April with the following tour schedule: Rochester, Kasson-Mantorville, Owatonna, Chatfield, Winona, Lake City, and Rochester.

J2G Endorsed Projects include Hubworks.mn, STEAM (Science, Technology, Engineering, Art, Math), Cradle to Career, Job Shadow Program, and much more throughout the region.

www.j2gmn.com



70+
projects



18
communities*



\$324M+
invested



1,200+
jobs created

*Data compiled from reports received from DEED & J2G Implementation Partners.