

# Quarterly Economic Report

Rochester Area Economic Development, Inc. (RAEDI)

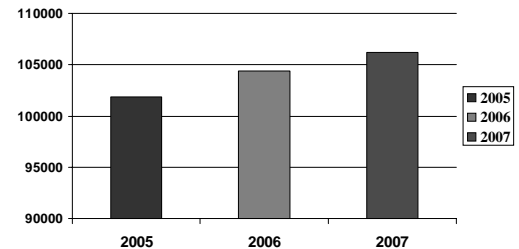
First Quarter, 2007

## Total Employment

Total employment figures in the last 12 months have shown a moderate increase of 1,746 jobs since the first quarter 2006 and an increase of 4,284 jobs since first quarter 2005. This long-term trend of employment growth in the first quarter has continued for more than 13 years.

As expected there was a seasonal decline in total employment of 1.1 percent for the quarter. The loss of 1,216 jobs brought the total employment figure down to 106,161 from the December level of 107,377. Totals for January, February and March were 105,955, 105,407 and 106,161 respectively.

First Quarter Total Employment Annual Comparison



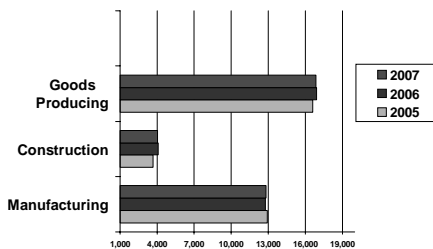
## Goods Producing

Overall, the goods producing sector dropped slightly with a loss of 25 jobs in the past 12 months for a decrease of one tenth of one percent. First quarter job losses of 551 showed a seasonal decrease of 3.2 percent.

Manufacturing posted an increase of 62 jobs for the quarter while construction lost 489 jobs. In the last 12 months, manufacturing was up by 29 jobs while construction was down by 54 jobs.

Employment totals in goods producing for January, February and March were 16,780, 16,710 and 16,866.

Goods Producing Employment First Quarter Comparisons



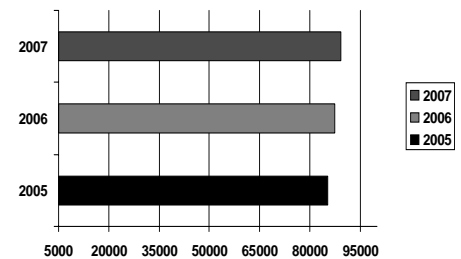
## Service Providing

In the last 12 months, Service Providing payroll levels have increased by 1,771 jobs for a growth rate of 2.0 percent. Job creation was widespread with seven of the ten sectors showing growth.

Education and Health Services reported the largest gain of 1,483 jobs in the last year.

For the quarter, the Service Providing sector reported a seasonal loss of 665 jobs or seven tenths of one percent from fourth quarter 2006.

First Quarter Service Providing Annual Comparison

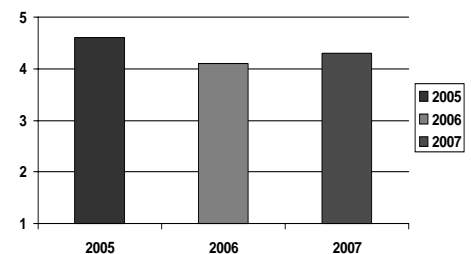


## Unemployment Rate

The Rochester unemployment rate increased by eight tenths of one percent since December ending the first quarter rate in March at 4.3 percent. The rates for January and February were 4.6 and 4.4 percent respectively. The Rochester average remains below the state and U.S. averages of 4.9% and 4.5% percent respectively. During the past 12 months, the average unemployment rate for Rochester was 3.5 percent.

The March labor force figure of 104,118 represents a decrease of four tenths of one percent from the December figure of 104,579.

First Quarter Unemployment Annual Comparison Percentage



Source: Minnesota Workforce Center

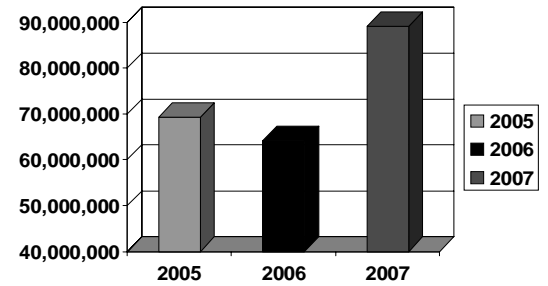
First Quarter

## Building Activity

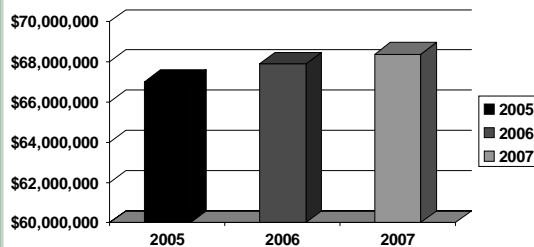
Commercial and residential building permits issued for first quarter 2007 totaled \$89,036,726. This represents an increase of 38.8 percent from first quarter 2006 (\$64,132,284) and an increase of 28.6 percent over 2005 (\$69,248,771). Permits over \$1 million for first quarter 2007 included Centex Homes (2 story/10 units), Mayo/Gonda Floors 14 & 15-Orthopedics, Mayo/Diagnostic Floor 16 Pediatric Remodel, Mayo/Gonda Floor 19, Interior Fit-Up, Mayo/Gonda Floor 17-Sleep Center and Floor 18-Paluminary, Village on 3rd, Knutson Office Building, Kwik Trip Store, Mayo/Charlton Hyperbaric and Altitude Medicine, Wehrenberg Theatres (structural shell), and Maine Street Development (structural shell).

Source: Rochester Building Safety Department

## First Quarter Commercial & Residential Valuation



## First Quarter MLS Sales



## First Quarter Home Sales

First quarter sales of single family homes reached \$68,384,022. This represents an increase of seven tenths of one percent over first quarter 2006 and 2.1 percent over first quarter 2005.

The average home remains on the market in the Rochester area for 128 days. Mortgage rates continue to remain relatively low.

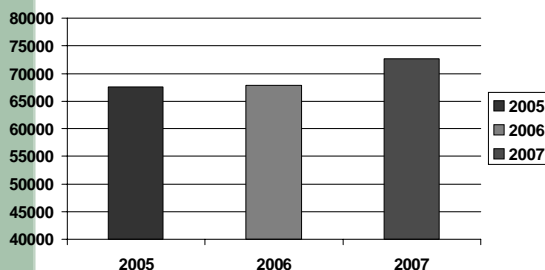
Source: SE Minnesota Association of Realtors

# RAEDI

Rochester Area Economic Development, Inc.  
220 S. Broadway, Suite 100  
Rochester, MN 55904

This report is published quarterly and is available through our website at [raedi.com](http://raedi.com) or by calling the Rochester Area Economic Development, Inc. office at (507) 288-0208.

## Airport Passenger Traffic First Quarter Comparison



## Quarterly Airport Traffic

The Rochester Airport serviced 72,654 passengers during the first quarter of 2007. This represents an increase of 7.1 percent over first quarter 2006 (67,810 passengers) and 7.6 percent over first quarter 2005 (67,550 passengers). Passenger totals for January, February and March were 24,437, 22,208, and 26,009 respectively.

Air cargo shipments were down 9.1 percent from first quarter 2006 and 20.3 percent from 2005. Source: Airport Manager

First Quarter